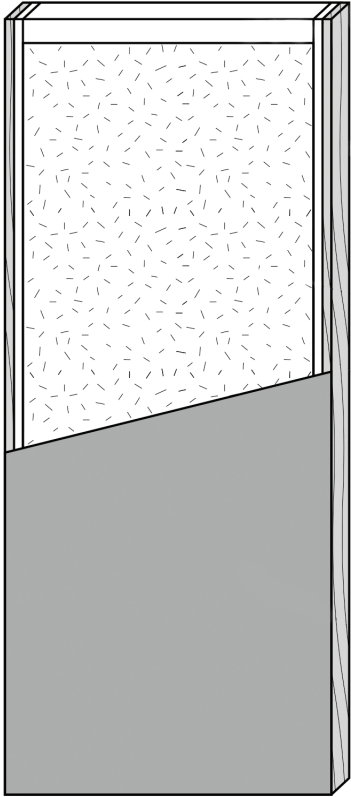


RK6000 - Architectural 3-Ply Flush Door

A custom-sized, solid core door for high-end residential or commercial applications.



Specifications

Core

High-density particleboard (MOR of 725 psi, MOE of 148K psi). Meets LD-1 and LD-2 ANSI standards for strength and durability. Alternative options include a specialty particleboard for LEED applications (MOR of 1950 psi, MOE of 350K psi), or a honeycomb core which maintains strength and reduces weight.

Rails

Engineered structural composite lumber (solid wood as an alternative) at a minimum width of 2 5/8" (66.68mm), bonded to core.

Stiles

Engineered structural composite lumber (solid wood as an alternative) at a minimum width of 1 1/8" (28.58mm), bonded to core.

Edges

Solid hardwood (poplar as standard), at a minimum width of 7/8" (22.23mm), laminated to inner stile.

Faces

3.0mm HDF as standard. Alternatives include 1.6mm HDF, 1/4" MDF.

Finish

Paint grade, primed, or shop painted.

Additional Options

Fire Rating

20-Minute Warnock Hersey fire door certification. Fire rated doors have specific design restrictions and all hardware preparation must be completed by RK. Please contact your sales representative for more details.

Lite Openings

Various lite openings available. Please refer to door styles for options, or send us your custom design.

Grooving

Various grooving designs available. Please refer to door styles for options, or send us your custom design.

Hardware Preparation

RK is capable of preparing your doors for all hardware requirements, including standard hinges, concealed hinges, pivot hinges, mortise locks, auto door bottoms, face pulls, edge pulls, and more.

Warranty

Three-year limited warranty. For interior use only.

Special Applications

Doors can be manufactured to customer requirements to include transom panels, matching pairs, etc. Please contact your sales representative to discuss your project.