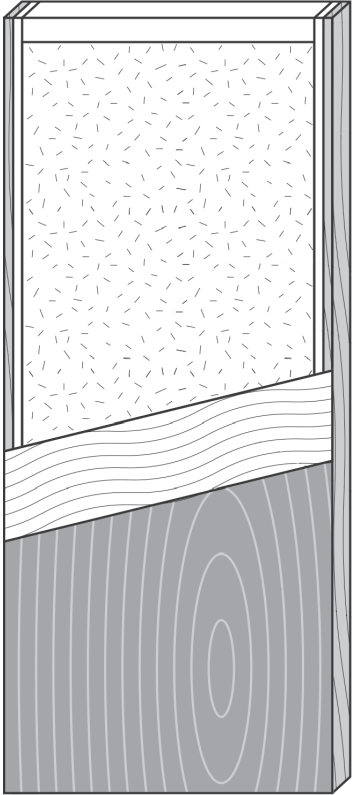


RK7000 - Architectural 5-Ply Flush Door

A custom-sized, solid core door in wood veneer or plastic laminate.

Specifications



Core

High-density particleboard (MOR of 725 psi, MOE of 148K psi). Meets LD-1 and LD-2 ANSI standards for strength and durability. Alternative options include a specialty particleboard for LEED applications (MOR of 1950 psi, MOE of 350K psi), or a honeycomb core which maintains strength and reduces weight.

Rails

Engineered structural composite lumber (solid wood as an alternative) at a minimum width of 2 5/8" (66.68mm), bonded to core.

Stiles

Engineered structural composite lumber (solid wood as an alternative) at a minimum width of 1 1/8" (28.58mm), bonded to core.

Edges

Solid hardwood to match veneer or plastic laminate, at a minimum width of 7/8" (22.23mm), laminated to inner stile.

Crossband

1.6mm HDF crossbanding.

Faces

Any species of commercially available wood veneer (book/slip/sequence matched, horizontal/vertical grain), or plastic laminate.

Finish

Stain grade, clear lacquered, or pre-finished a custom stain.

Additional Options

Fire Rating

20-Minute Warnock Hersey fire door certification. Fire rated doors have specific design restrictions and all hardware preparation must be completed by RK. Please contact your sales representative for more details.

Lite Openings

Various lite openings available. Please refer to door styles for options, or send us your custom design.

Grooving/Solid Inlays

Various grooving designs available. Please refer to door styles for options, or send us your custom design.

Hardware Preparation

RK is capable of preparing your doors for all hardware requirements, including standard hinges, concealed hinges, pivot hinges, mortise locks, auto door bottoms, face pulls, edge pulls, and more.

Warranty

Three-year limited warranty. For interior use only.

Special Applications

Doors can be manufactured to customer requirements to include transom panels, matching pairs, etc. Please contact your sales representative to discuss your project.